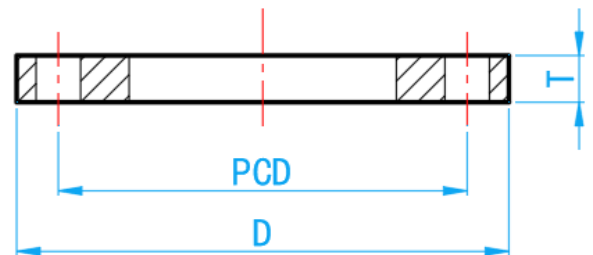
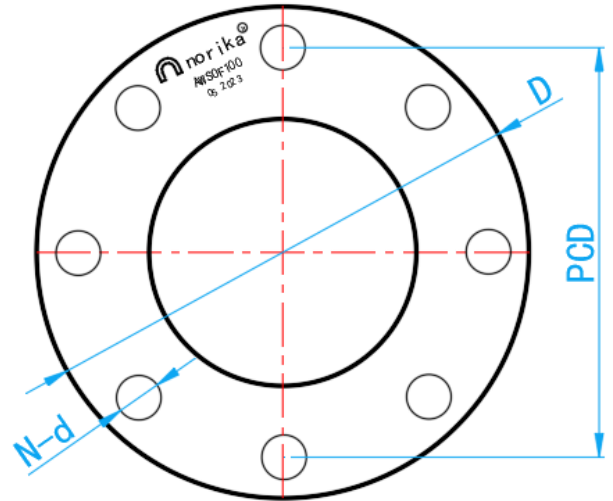


# AW SOFF(SLIP-ON FLAT FACE) FLANGE

COMPLY WITH JIS 10K



CROSS SECTIONAL VIEW

**COMPONENT PARTS**

| PARTS  | MATERIAL |
|--------|----------|
| Flange | UPVC     |

**DIMENSIONS**

| SKU      | SIZE (mm) | PCD (mm) | n-d (mm) | D (mm) | T (mm) | WEIGHT (kg) |
|----------|-----------|----------|----------|--------|--------|-------------|
| AWSOF050 | 50        | 120      | 4-19     | 155    | 20     | 0.450       |
| AWSOF065 | 65        | 140      | 4-19     | 175    | 20     | 0.580       |
| AWSOF080 | 80        | 150      | 8-19     | 185    | 20     | 0.545       |
| AWSOF100 | 100       | 175      | 8-19     | 210    | 20     | 0.660       |
| AWSOF150 | 150       | 240      | 8-23     | 280    | 20     | 1.120       |
| AWSOF200 | 200       | 290      | 12-23    | 330    | 20     | 1.350       |
| AWSOF250 | 250       | 355      | 12-25    | 400    | 20     | 1.915       |